



## 3138-N Dual Action Tamp

Printer Applicator



Have a Label-Aire  
Authorized Distributor  
contact you. Visit  
[www.mpilabels.com](http://www.mpilabels.com).

Model 3138-N  
DAT

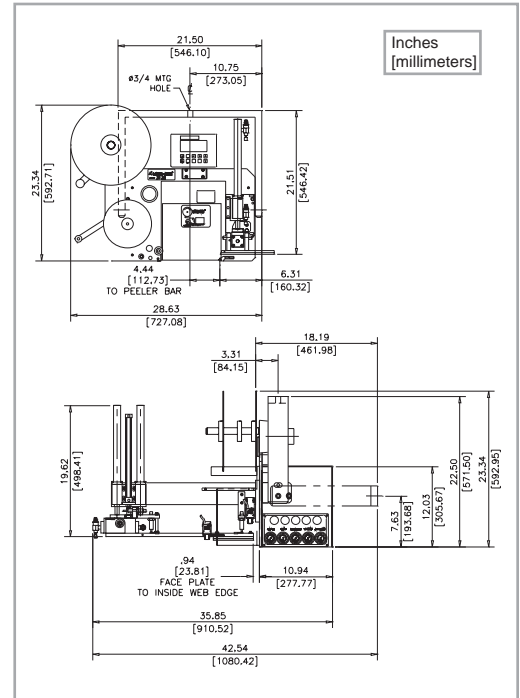
# 3138-N Dual Action Tamp Printer Applicator Specifications

The Label-Aire® Model 3138-N Dual Action Tamp (DAT) Printer Applicator makes dual panel labeling even easier.

The Model 3138-N DAT showcases the latest in dual panel labeling. Featuring Label-Aire's renowned New Generation technology, the 3138-N DAT is the ideal choice for the most demanding print and apply applications. The heavy duty dual action air cylinder tamp rotates 90° across the conveyor to apply the first printed label. The second straight line stroke extends applying the second label onto the side panel.

Advanced features found in our standard 3138-N Printer Applicator include automatic setup, an enhanced two-line digital display with full-error messaging, multiple programmable label pages for easy change-overs to labels of different sizes, rate compensation for improved label accuracy, and advanced user-configurable I/O connectivity. These helpful features greatly simplify setup and change-overs making labeling easier. The workhorse 3138-N Dual Action Tamp is just as rugged as it is advanced and user-friendly. Its tough stainless steel and anodized aluminum construction is corrosion resistant for long-term durability and maintenance-free operation in the most hostile environments.

Put this advanced workhorse dual panel printer applicator to work for you 24/7. The Model 3138-N DAT Printer Applicator is designed to run seamlessly in your operation, saving you money in the long run.



## Dimensions:

Height: 23.3" (592 mm)  
Length: 28.6" (727 mm)  
Width: 35.9" (911 mm)

## Weight:

165 lbs. (75 kg) not including the printer

## Standard Label Dimensions:

Label Width: Up to 7.2" (183 mm)  
Label Length: Up to 7" (178 mm)  
(Printer dependent)

## Dispense Speed:

Up to 16" (406 mm) per second depending on printer and label size

## Label Dispense Accuracy:

+/- 1/32" (.8 mm)

## Electrical:

115 Volts AC 60 Hz 5 Amps.  
220 Volts AC 50 Hz 5 Amps.

## Air:

4 cfm at 90 psi for most applications

## Options:

Datamax, Sato, and Zebra O.E.M. print engines  
17" (432 mm) powered unwind configuration  
**Consult factory for additional options.**

## 3138-N DAT Advanced Features

<b>Heavy duty dual action air cylinder</b>	90° rotation and straight line extension dual panel labeling with 24/7 reliability.
<b>Automatic setup</b>	Includes multiple programmable label pages for easy change-overs to different label sizes.
<b>Digital display</b>	Remote operator control capability.
<b>Flash memory</b>	Allows easy download of system software updates.
<b>Rate compensation</b>	For improved label placement accuracy.
<b>Advanced I/O</b>	User-configurable for system output.



### Headquarters

550 Burning Tree Road  
Fullerton, CA 92833 USA

714.449.5155  
714.526.0300  
info@label-aire.com  
www.label-aire.com

### Europe

Sjællandsvej 27A  
DK-9500 Hobro, Denmark

+45.9657.0063  
+45.9657.0064  
info@label-aire.com  
www.label-aire.com

### Asia

No. 10, Lane 228, Taisi S. Road  
Longjing Township  
Taichung County 434, Taiwan

+886.4.2395.5684  
+886.4.2395.8007  
info@label-aire.com  
www.label-aire.com

Distributed by:



1421 W. Main Street  
Alliance, Ohio 44601  
330-938-2134  
www.mpilabels.com